



MIGHTY SYNERGY INDUSTRIES SDN BHD

309775-h

No. 16, Lorong Industri 15, Taman Bukit Panchor, 14300 Nibong Tebal, Penang, Malaysia.

Tel : +604-593 1818 Fax : +604-593 1919

Email : msi@msi.com.my Website : www.msi.com.my



MCF BARE CHANNEL FITTING_METAL REF

FEATURES & BENEFIT

- * Basic fluorescent lighting with minimum number of components for low maintenance and easy installation.
- * For use in area where directional control of illumination is minimal.

APPLICATION

- * Suitable as general lighting in both industrial and domestic application.
- * School, corridors, walkaway, lift lobby and staircase.

PRODUCT DESCRIPTION

HOUSING MATERIAL	: COLD ROLLED STEEL
COATING	: WHITE EPOXY POWDER
RATE INPUT VOLT & FREQ	: 220-240V, 50/60 HZ
POWER FACTOR	: 0.5 / 0.9
THD	: ≤20%
IP RATING	: IP20
CCT	: 3000K / 4000K / 6500K
LIFE SPAN	: 15,000 / 30,000 / 50,000 HOURS

ORDER INFORMATION

ORDERING CODE		DIMENSION (in mm) ± 1.5mm		
MODEL	RATING	A	B	C
MCF 120	1 X 20W	53	88	614
MCF 140	1 X 40W	53	88	1224
MCF 220	2 X 20W	53	88	614
MCF 240	2 X 40W	53	88	1224

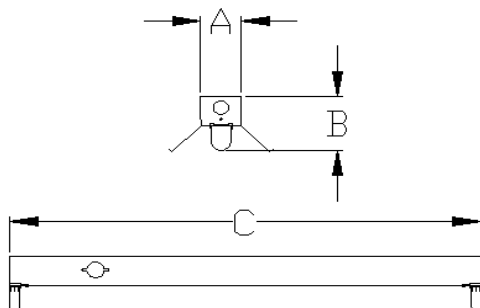
OPTIONAL CONTROL GEAR / COMPONENTS

EMERGENCY POWER-PACK

LAMPS

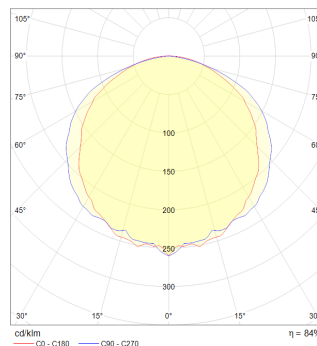
DIMENSION (± 1.5mm)

120 / 140 / 220 / 240



PHOTOMETRIC

120 / 140



220 / 240

