



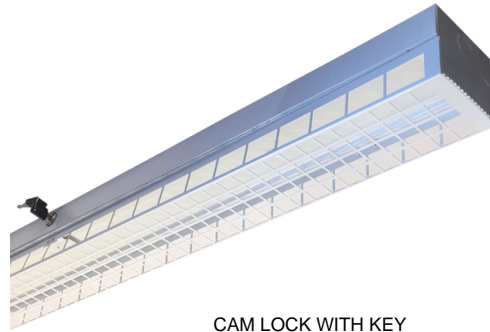
MIGHTY SYNERGY INDUSTRIES SDN BHD

309775-h

No. 16, Lorong Industri 15, Taman Bukit Panchor, 14300 Nibong Tebal, Penang, Malaysia.
 Tel : +604-593 1818 Fax : +604-593 1919
 Email : msi@msi.com.my Website : www.msi.com.my



PAD LOCK



CAM LOCK WITH KEY

MWG WIRE GUARD FITTING

FEATURES & BENEFIT

- * Derived from channel fitting, wire guard fitting is equipped with heavy gauge wire guard to prevent vandalism and accidental breakage.
- * For use in area where directional control of illumination is minimal.

APPLICATION

- * Suitable for general illumination in public areas.
- * Stairways, corridors, walkaway and staircase.

PRODUCT DESCRIPTION

HOUSING MATERIAL	: COLD ROLLED STEEL
COATING	: WHITE EPOXY POWDER
RATE INPUT VOLT & FREQ	: 220-240V, 50/60 HZ
POWER FACTOR	: 0.5 / 0.9
THD	: ≤20%
IP RATING	: IP20
CCT	: 3000K / 4000K / 6500K
LIFE SPAN	: 15,000 / 30,000 / 50,000 HOURS

ORDER INFORMATION

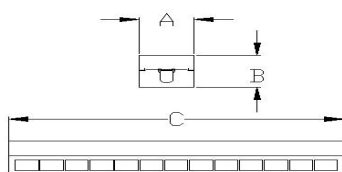
ORDERING CODE		DIMENSION (in mm) ± 1.5mm		
MODEL	RATING	A	B	C
MWG 120	1 X 20W	100	90	620
MWG 140	1 X 40W	100	90	1230
MWG 220	2 X 20W	100	90	620
MWG 240	2 X 40W	100	90	1230

OPTIONAL CONTROL GEAR / COMPONENTS

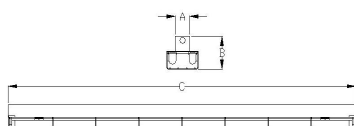
- EMERGENCY POWER-PACK
- LAMPS

DIMENSION (± 1.5mm)

120 / 140

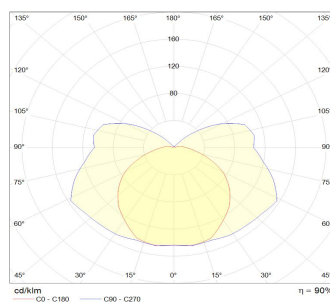


220 / 240

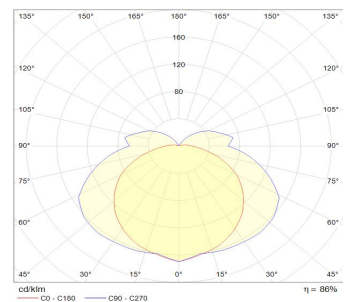


PHOTOMETRIC

120 / 140



220 / 240



*MSI reserve the right to change and amend the specification without prior notice

*Actual power consumption may vary from supplier's specification subject to power supply voltage etc variations