



**MIGHTY SYNERGY INDUSTRIES SDN BHD**

309775-h

No. 16, Lorong Industri 15, Taman Bukit Panchor, 14300 Nibong Tebal, Penang, Malaysia.  
 Tel : +604-593 1818 Fax : +604-593 1919  
 Email : msi@msi.com.my Website : www.msi.com.my



# MWG WIRE GUARD ENDCAP FITTING

**FEATURES & BENEFIT**

- \* Basic fluorescent lighting with minimum number of components for low maintenance and easy installation.
- \* For use in area where directional control of illumination is minimal.

**APPLICATION**

- \* Suitable as general lighting in both industrial and domestic application.
- \* School, corridors, walkway, lift lobby and staircase.

**PRODUCT DESCRIPTION**

HOUSING MATERIAL	: COLD ROLLED STEEL
COATING	: WHITE EPOXY POWDER
RATE INPUT VOLT & FREQ	: 220-240V, 50/60 HZ
POWER FACTOR	: 0.5 / 0.9
THD	: ≤20%
IP RATING	: IP20
CCT	: 3000K / 4000K / 6500K
LIFE SPAN	: 15,000 / 30,000 / 50,000 HOURS

**ORDER INFORMATION**

ORDERING CODE		DIMENSION (in mm) ± 1.5mm		
MODEL	RATING	A	B	C
MWG EC 120	1 X 20W	53	100	620
MWG EC 140	1 X 40W	53	100	1230
MWG EC 220	2 X 20W	53	100	620
MWG EC 240	2 X 40W	53	100	1230

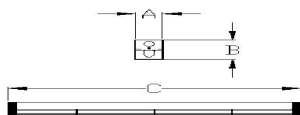
**OPTIONAL CONTROL GEAR / COMPONENTS**

- EMERGENCY POWER-PACK
- LAMPS

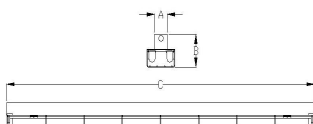
**PHOTOMETRIC**

**DIMENSION (± 1.5mm)**

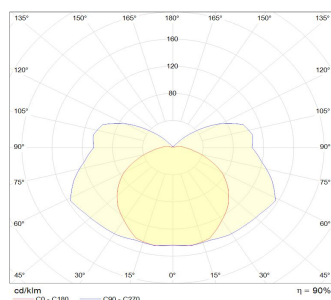
120 / 140



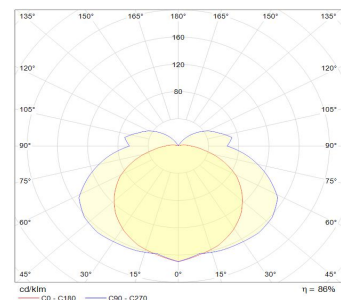
220 / 240



120 / 140



220 / 240



\*MSI reserve the right to change and amend the specification without prior notice

\*Actual power consumption may vary from supplier's specification subject to power supply voltage etc variations