



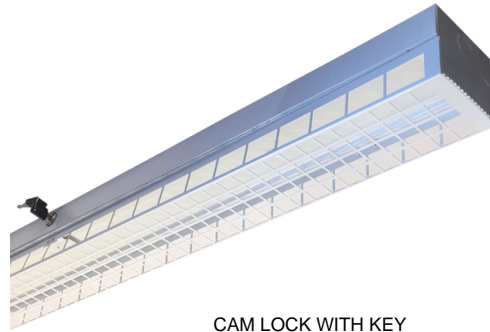
MIGHTY SYNERGY INDUSTRIES SDN BHD

309775-h

No. 16, Lorong Industri 15, Taman Bukit Panchor, 14300 Nibong Tebal, Penang, Malaysia.
 Tel : +604-593 1818 Fax : +604-593 1919
 Email : msi@msi.com.my Website : www.msi.com.my



PAD LOCK



CAM LOCK WITH KEY

MWG WIRE GUARD FITTING

FEATURES & BENEFIT

- * Derived from channel fitting, wire guard fitting is equipped with heavy gauge wire guard to prevent vandalism and accidental breakage.
- * For use in area where directional control of illumination is minimal.

APPLICATION

- * Suitable for general illumination in public areas.
- * Stairways, corridors, walkaway and staircase.

PRODUCT DESCRIPTION

HOUSING MATERIAL	: COLD ROLLED STEEL
COATING	: WHITE EPOXY POWDER
RATE INPUT VOLT & FREQ	: 220-240V, 50/60 HZ
POWER FACTOR	: 0.5 / 0.9
THD	: ≤20%
IP RATING	: IP20
CCT	: 3000K / 4000K / 6500K
LIFE SPAN	: 15,000 / 30,000 / 50,000 HOURS

ORDER INFORMATION

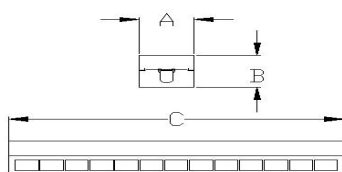
ORDERING CODE		DIMENSION (in mm) ± 1.5mm		
MODEL	RATING	A	B	C
MWG 120	1 X 20W	100	90	620
MWG 140	1 X 40W	100	90	1230
MWG 220	2 X 20W	100	90	620
MWG 240	2 X 40W	100	90	1230

OPTIONAL CONTROL GEAR / COMPONENTS

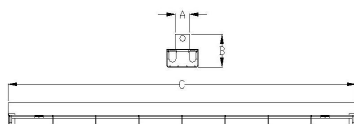
- EMERGENCY POWER-PACK
- LAMPS

DIMENSION (± 1.5mm)

120 / 140

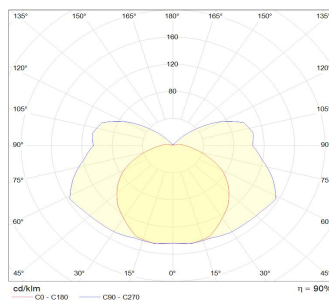


220 / 240

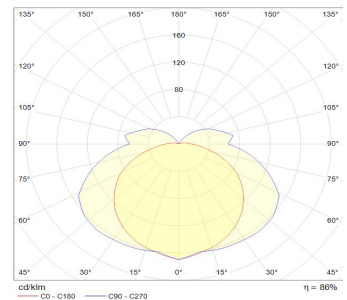


PHOTOMETRIC

120 / 140



220 / 240



*MSI reserve the right to change and amend the specification without prior notice

*Actual power consumption may vary from supplier's specification subject to power supply voltage etc variations



MIGHTY SYNERGY INDUSTRIES SDN BHD

No. 16, Lorong Industri 15, Taman Bukit Panchor, 14300 Nibong Tebal, Penang, Malaysia.
 Tel : +604-593 1818 Fax : +604-593 1919
 Email : msi@msi.com.my Website : www.msi.com.my

MCF BARE CHANNEL FITTING

FEATURES & BENEFIT

- * Basic fluorescent lighting with minimum number of components for low maintenance and easy installation.
- * For use in areas where directional control of illumination is minimal.

APPLICATION

- * Suitable as general lighting in both industrial and domestic application.
- * School, corridors, walkaway, lift lobby and staircase.

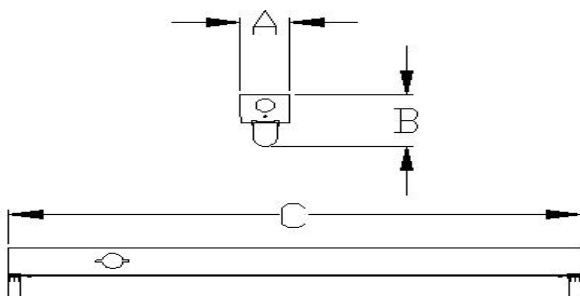
PRODUCT DESCRIPTION

HOUSING MATERIAL	: COLD ROLLED STEEL
COATING	: WHITE EPOXY POWDER
RATE INPUT VOLT & FREQ	: 220-240V, 50/60 HZ
POWER FACTOR	: 0.9
THD	: ≤20%
IP RATING	: IP20
LIFE SPAN	: 30,000 / 50,000 HOURS

OPTIONAL CONTROL GEAR / COMPONENTS

ELECTRONIC BALLAST
EMERGENCY POWER-PACK
LAMPS

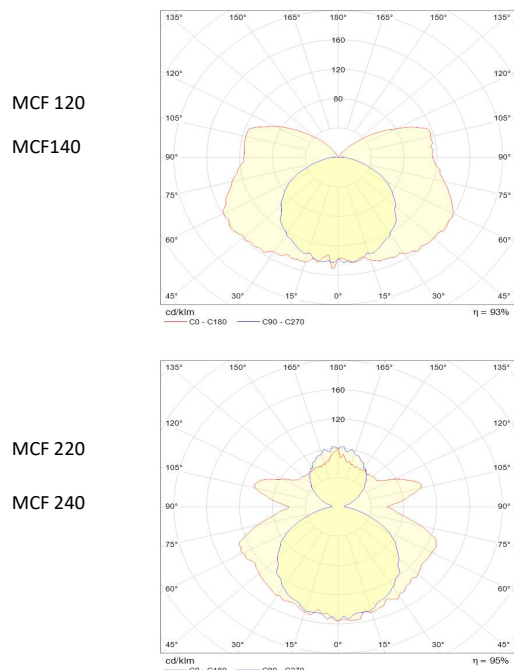
DIMENSION (± 1.5mm)



ORDERING INFORMATION

ORDERING CODE		DIMENSION (in mm) ± 1.5mm		
MODEL	RATING	A	B	C
MCF 120	1 X 20W	53	88	614
MCF 140	1 X 40W	53	88	1224
MCF 220	2 X 20W	53	88	614
MCF 240	2 X 40W	53	88	1224

PHOTOMETRIC





MIGHTY SYNERGY INDUSTRIES SDN BHD

No. 16, Lorong Industri 15, Taman Bukit Panchor, 14300 Nibong Tebal, Penang, Malaysia.
 Tel : +604-593 1818 Fax : +604-593 1919
 Email : msi@msi.com.my Website : www.msi.com.my



FEATURES & BENEFIT : ABC TESTING

LOCATION : UTILITY ROOM
CODE / MODEL : CR2444WD/PD

DESCRIPTION : CR24-240 RECESSED CLEAN ROOM FITTING WITH PRISMATIC DIFFUSER C/W 2 X OSRAM LEDVANCE ST8A

ELECTRICAL DATA

RATE INPUT VOLT & FREQ : 220-240V, 50/60 HZ (0.15 A)
 POWER FACTOR : 0.9
 EFFICIENCY : $\geq 120\text{LM/W}$
 T.POWER COMSUMPTION : 36W

LIGHT SOURCE

LUMINOUS FLUX : 2100LM
 CCT : 6500K
 CRI : 80
 SDCM : < 6
 IP RATING : IP66

CONTROL

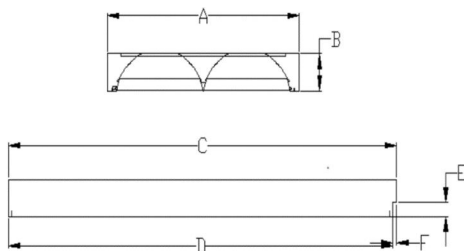
ANALOG : -

MECHANICAL DATA

WEIGHT : 5.5kg \pm
 L(C) x W(A) x H(E) : 1224mm x 603mm x 35mm

DIMENSION ($\pm 1.5\text{mm}$)

A: 603mm
 B: 90mm
 C: 1224mm
 D: 1212mm
 E: 35mm
 F: 12mm



OPERATING ENVIRONMENT PARAMETER

OPERATING TEMPERATURE : 0...45°C
 STORAGE TEMPERATURE : -25...+85°C
 HUMIDITY : 10...90%
 TC POINT MARKING : 85°C

CONTROL GEAR / DRIVER

BRAND : OSRAM
 MODEL : ST8A
 RATED POWER : 17.5W
 POWER FACTOR : 0.9
 THD : $\leq 20\%$
 LIFE SPAN : 50,000 HOURS

ACCESSORIES

HOUSING : COLD ROLL STEEL
 COATING : LIGHT GREY POWDER
 DIFFUSER : PRISMATIC

