



MIGHTY SYNERGY INDUSTRIES SDN BHD

309775-h

No. 16, Lorong Industri 15, Taman Bukit Panchor, 14300 Nibong Tebal, Penang, Malaysia.
 Tel : +604-593 1818 Fax : +604-593 1919
 Email : msi@msi.com.my Website : www.msi.com.my



ILITE AR SURFACE FITTING

FEATURES & BENEFIT

- * Designed for recessed-mounting on suspended tee-bar ceiling.
- * High specification aluminium mirror reflectors are optically efficient, even light distribution and glare control

APPLICATION

- * Suitable as general lighting in both industrial and domestic application.
- * School, corridors, walkaway, lift lobby and staircase.

PRODUCT DESCRIPTION

HOUSING MATERIAL	: COLD ROLLED STEEL
COATING	: WHITE EPOXY POWDER
RATE INPUT VOLT & FREQ	: 220-240V, 50/60 HZ
POWER FACTOR	: 0.5 / 0.9
THD	: ≤20%
IP RATING	: IP20
CCT	: 3000K / 4000K / 6500K
LIFE SPAN	: 15,000 / 30,000 / 50,000 HOURS

ORDER INFORMATION

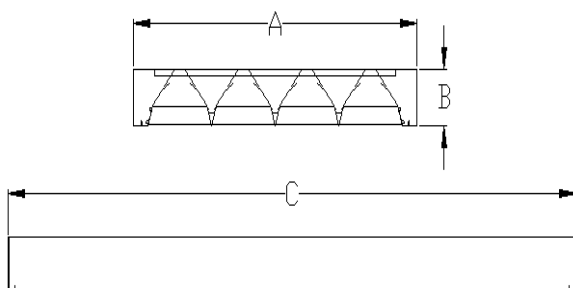
ORDERING CODE		DIMENSION (in mm) ± 1.5mm		
MODEL	RATING	A	B	C
ES 12-220 AR	2 X 20W	30	70	614
ES 14-240 AR	2 X 40W	30	70	1224
ES 22-220 AR	2 X 20W	610	70	614
ES 22-320 AR	3 X 20W	610	70	614
ES 22-420 AR	4 X 20W	610	70	614
ES 24-240 AR	2 X 40W	610	70	1224
ES 24-340 AR	3 X 40W	610	70	1224
ES 24-440 AR	4 X 40W	610	70	1224

OPTIONAL CONTROL GEAR / COMPONENTS

EMERGENCY POWER-PACK

LAMPS

DIMENSION (± 1.5mm)



PHOTOMETRIC

