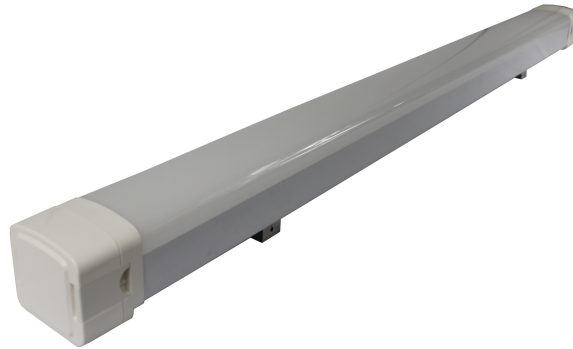




**MIGHTY SYNERGY INDUSTRIES SDN BHD**

309775-h

No. 16, Lorong Industri 15, Taman Bukit Panchor, 14300 Nibong Tebal, Penang, Malaysia.  
 Tel : +604-593 1818 Fax : +604-593 1919  
 Email : msi@msi.com.my Website : www.msi.com.my



# LAC.EXT LED ANTI-CORROSSIVE FITTING

**FEATURES & BENEFIT**

- \* A range of corrosion resistant luminaires for use in a wide variety of interior and exterior applications.
- \* Injection moulded diffuser positively retained with polycarbonate fixing clip and standard.

**APPLICATION**

- \* Suitable as general lighting in both industrial and domestic application.
- \* Surface or wall mounted, workshops, laboratories, loading bays and chemical stores.

**PRODUCT DESCRIPTION**

HOUSING MATERIAL	: POLYCARBONATE
COATING	: WHITE
RATE INPUT VOLT & FREQ	: 220-240V, 50/60 HZ
POWER FACTOR	: 0.9
THD	: ≤20%
IP RATING	: IP65
CCT	: 3000K / 4000K / 6500K
LIFE SPAN	: 30,000 / 50,000 HOURS

**ORDER INFORMATION**

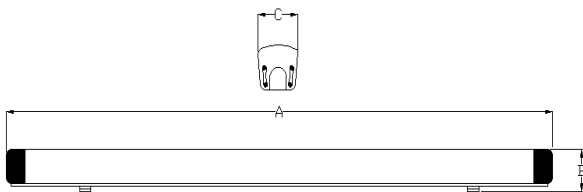
ORDERING CODE		DIMENSION (in mm) ± 1.5mm		
MODEL	RATING	A	B	C
LAC.EXT.2	1 X 20W	605	70	85
LAC.EXT.4	2 X 40W	1205	70	85

**OPTIONAL CONTROL GEAR / COMPONENTS**

EMERGENCY POWER-PACK

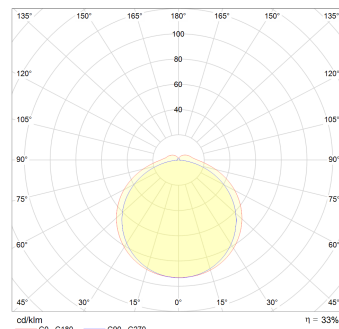
LAMPS

**DIMENSION (± 1.5mm)**



**PHOTOMETRIC**

120 / 140



\*MSI reserve the right to change and amend the specification without prior notice

\*Actual power consumption may vary from supplier's specification subject to power supply voltage etc variations